

THE RURAL MUNICIPALITY OF MORRIS

BY-LAW NO. 1440/93

WHEREAS the Council of the Rural Municipality of Morris wishes to amend the Morris Planning Scheme 1968;

AND WHEREAS Section 95(2) of The Planning Act provides that a planning scheme may be amended;


AND WHEREAS Council deems it expedient and advisable to amend the Morris Planning Scheme 1968;

NOW THEREFORE BE IT RESOLVED that the Council of the Rural Municipality of Morris, in a meeting duly assembled, enacts as follows:

1. That the land described as follows:
The general south east corner of Lot 2, in Plan 1915, in Sperling Manitoba as indicated by diagonal lines on the map marked Schedule "A" to this By-law be hereby now zoned to "GC" General Commercial District.
2. That Appendix "C" of the Morris Planning Scheme 1971B which is amending District Map 5 of the Morris Planning Scheme 1968 be hereby amended in accordance to this by-law.
3. That the Reeve and Secretary-Treasurer be and they are hereby authorized to do all things necessary to give force and effect to this by-law.

DONE AND PASSED in open Council of the Rural Municipality of Morris duly assembled this 12th day of August, 1993.


Reeve


Secretary-Treasurer

Read a first time on the 10th day of June, 1993.

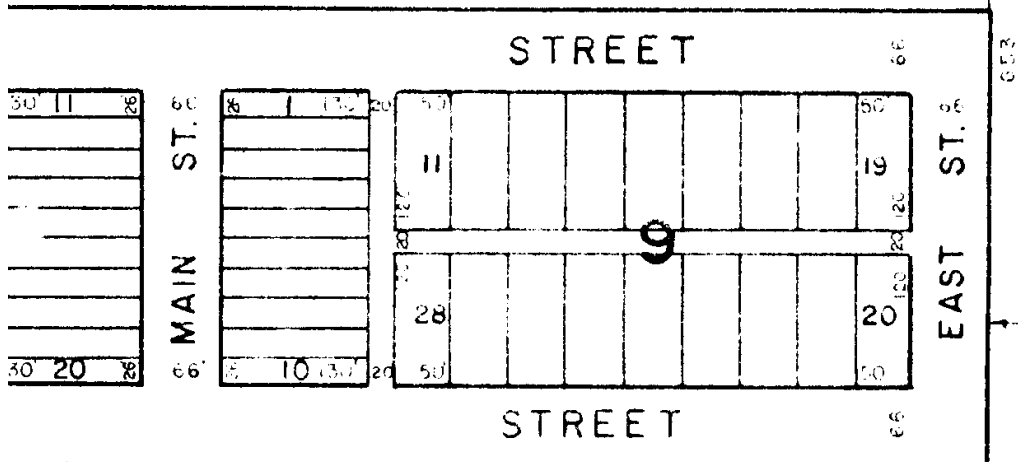
Read a second time on the 12th day of August, 1993.

Read a third time on the 12th day of August, 1993.

AN

No.

912



SPERLING

SCHEDULE "A"
BY-LAW NO. 1440/93

GROUNDS

