

The Rural Municipality of Morris

BY-LAW NO. 1641/09

BEING a By-law of the Rural Municipality of Morris to open a municipal road

WHEREAS, Section 289(a) of The Municipal Act provides as follows:

“A municipality may open land for public use as a municipal road by
(a) Passing a by-law opening the road; and
(b) Registering the by-law and a plan at the appropriate land titles office.”

AND WHEREAS it is deemed necessary and desirable to open a municipal road over, upon and across the land hereinafter described;

NOW THEREFORE the Council of the Rural Municipality of Morris enacts as follows:

1. THAT a municipal road be and is hereby opened and established over, upon and across the lands described as follows:

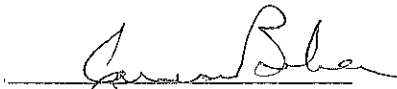
All that portion of the municipal road shown on a plan prepared by Ray Michalenko – WLTO Deposit Number 1026/2008 on the 24th day of June, 2008 and sworn to by them on the 2nd day of December, 2008 and as shown on the attached Schedule “A”.

And the said lands are hereby dedicated to the public for that purpose.

2. That the said plan of survey is hereby adopted and approved, and the chief administrative officer is authorized and directed to endorse the aforementioned plan of survey for identification, placing thereon his signature, under the corporate seal of the municipality, together with a reference to this by-law.

DONE AND PASSED by the Council of the Rural Municipality of Morris in the Province of Manitoba this 11th day of February, AD 2009.


REEVE


CAO

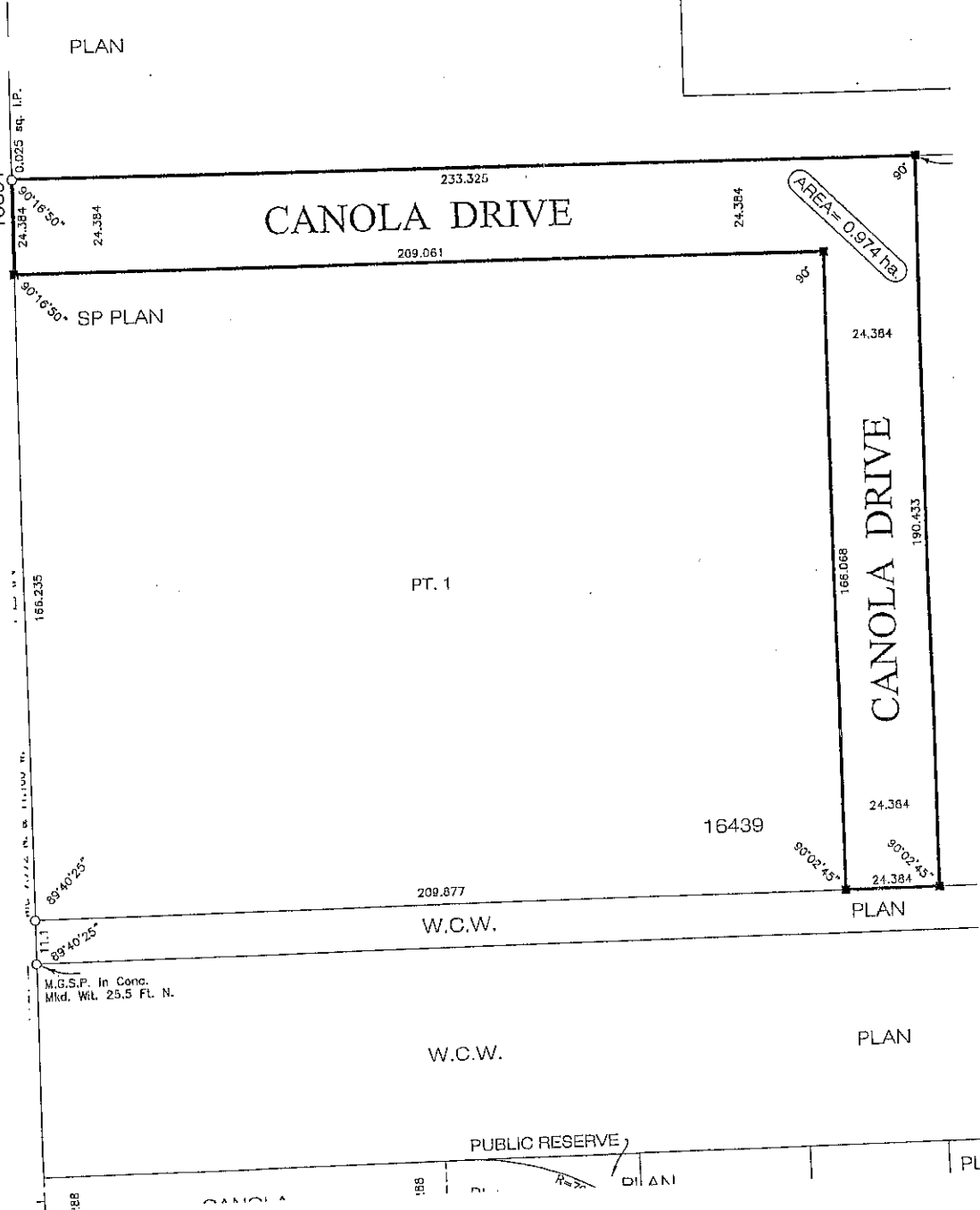
Read a first time on the 14th day of January, 2009.

Read a second time on the 1th day of February, 2009.

Read a third time on the 12th day of August, 2009.



PLAN



SCHEDULE "A"

By-Law 1641/09